

Nether Poppleton Parish Council

Chairman of Nether Poppleton Parish Council
4 Littlefield Close
Nether Poppleton
York
YO26 6HX

19 May 2014

Darren Richardson, Esq
Director, City and Environmental Services
City of York Council
West Offices
York
YO1 6GA.

Dear Mr Richardson

**NETHER POPPLETON (WITH UPPER POPPLETON)
APPLICATION FOR DESIGNATION OF NEIGHBOURHOOD PLAN AREA.**

I enclose a formal application to permit Nether Poppleton Parish Council to lead, in collaboration with Upper Poppleton Parish Council to begin preparations for the submission of a Neighbourhood Plan in these parishes.

We look forward to working closely with the relevant officers in your Department and as agreed we hope to receive a favourable response by at the latest September in order to be able to attract funding from relevant sources to fund this venture.

Yours sincerely



Glen Bradley
Chairman of Nether Poppleton Parish Council

Cc Caroline Strudwick
Rebecca Harrison
Stuart Robson (Chairman of Upper Poppleton Parish Council)
Cathie Brydson, Edie Jones, Peter Powel, Vivien Crabb (Steering Committee)

Nether Poppleton with Upper Poppleton Parish Councils

Application to City of York Council For designation of Neighbourhood Plan Area

Introduction

The two parishes of Nether and Upper Poppleton are situated approximately four miles north west of the centre of the historic city of York. The River Ouse bounds the village to the north and east and by the A 59 York to Harrogate road to the south and west. Poppleton, Nether and Upper, consists of two old village cores, which have coalesced to form one community. Recent expansion in the Parish of new housing and commercial areas now are included within the parish boundaries and it is the whole parished area that is the subject of the Neighbourhood Plan.

Statement explaining why the parish is considered to be an appropriate neighbourhood area.

The Parish Councils have jointly worked on a number of projects examples of which are attached as Appendix B. Whilst meeting independently the Parish Councils represent the interest of all the residents of the area designated on the attached map(Appendix A). Nether and Upper Poppleton are statutory consultees on planning applications within the parishes. Consultation to date shows that there is a desire for a neighbourhood plan, particularly given the recent government legislation with regard to localism. The villages jointly produced a Village Design Statement in 2003 and this will give the initial platform for the development of a Neighbourhood Plan. The Parishes already manage many areas, including the village greens, the Millennium Green, the Moat Field and other significant green spaces. The Parish Councils give financial support to numerous village groups and organisations and actively keep parishioners informed through its websites, Twitter account, notice boards and regular newsletters.(Appendix C example)

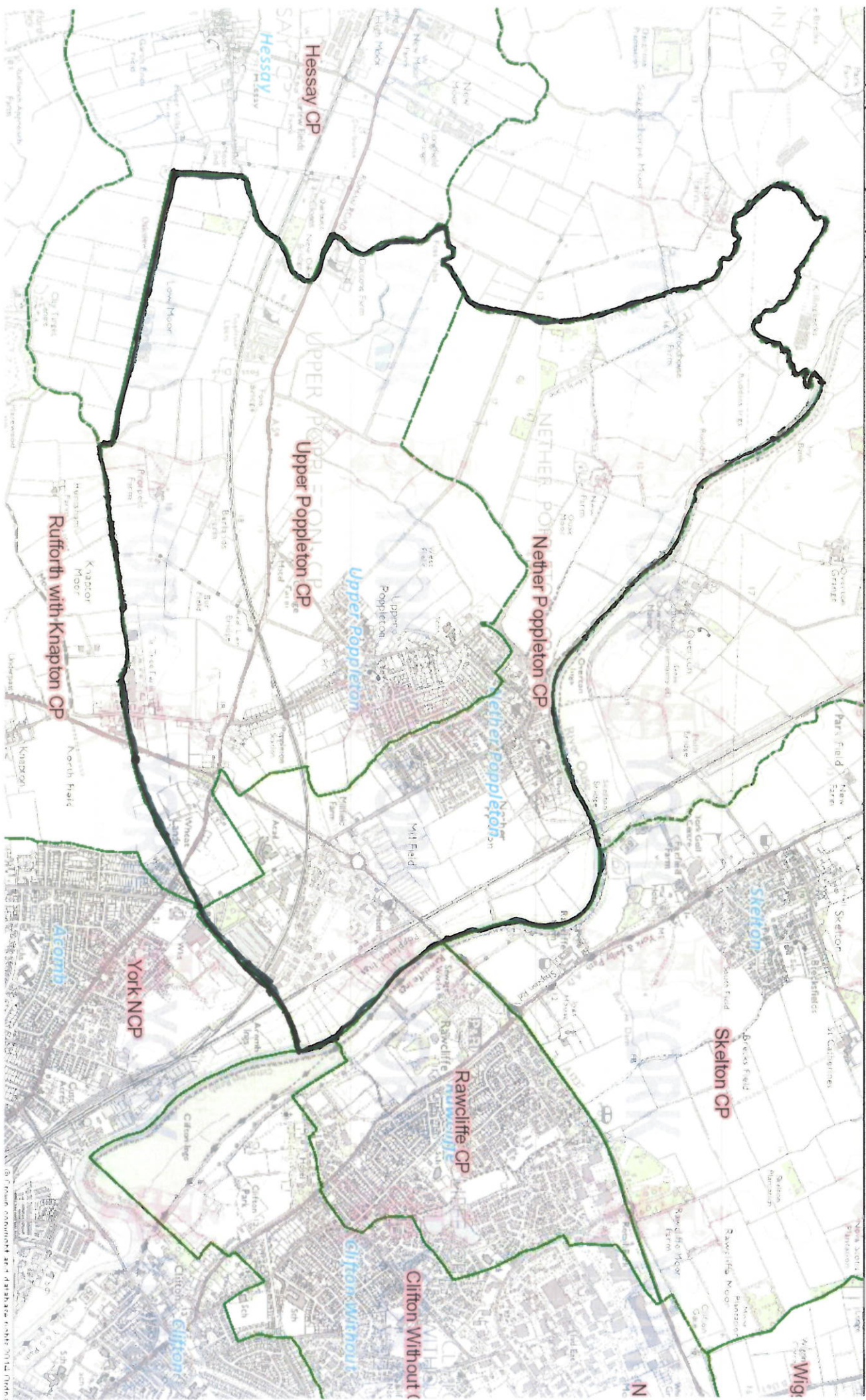
Nether Poppleton Parish Council as the Relevant Body

The two parish councils are the official statutory first tier of government in this parished area and enjoy strong support of the local community. For the purposes of this submission it has been agreed that the Chairman of Nether Poppleton Parish Council, will act as the lead to the executive committee comprising 2 councillors from each Parish. The Councils have considerable collective knowledge of their areas and a deep understanding of the area's planning opportunities and constraints and how these interact with the aspirations and concerns of the residents of the parishes.

Conclusion

Nether Poppleton Parish Council has been formally designated as the relevant body, working with the City of York Council, to produce the Neighbourhood Plan for the whole parished area.

(Appendix A). Map (Appendix B) List of shared projects



© Crown Copyright and database right 2014 Ordnance Survey 100019281

Appendix B

List of Shared projects between the two Parish Councils of Nether and Upper Poppleton.

- Poppleton Village Design Statement as Supplementary Planning Guidance August 2003.
- The Ecclesiastical Parish is known as the Parish of Nether with Upper Poppleton. This confirms the coalescent implied in the submission document.
- Joint collaboration with the Silver, Gold and Diamond Jubilee Celebrations of Her Majesty Queen Elizabeth 11.
- Joint entry into the Yorkshire in Bloom Competition 2012, 2013, 2014.
- Shared financial support in the village of Churches, Schools, Shops, Community Centre, Sports Clubs, and Historic Buildings, Youth Services.
- Joint attendance at meetings dealing with development of Poppleton Bar Park and Ride Scheme adjacent to the villages.
- Joint development of a vibrant community centre for use by villagers
- Joint development of traffic calming and traffic controls throughout the village.
- Collaborative and consultative meetings to deal with impact on the village of various schemes, such as residential development, wind farms and wind turbines.
- Joint work with City of York Councillor Ian Gilles when business park and employment developments have been undertaken.
- Joint work with the bus company First to ensure that there is public transport available throughout the day and evening within the village even during times when flooding occurs at the Ouse river bank.
- Impact analysis of the development of the Park and Ride Scheme on the residents of the village.
- Support for the local primary school nature reserve.
- Remembrance Sunday – joint civic service attended by councillors and residents from both Poppletons.
- 50th Anniversary of VE Day – joint funding to ensure a viable celebration for all residents
- Millennium Celebrations – joint funding to ensure a viable celebration for all residents.

Nether Poppleton Parish Council Newsletter Spring 2014

Welcome

Welcome to the Spring 2014 edition of the Nether Poppleton Parish Council newsletter.

In this edition we report on "Le Tour de France" coming in July, announce the completion of our new village sign, update you on Warren Lea and our Yorkshire in Bloom entry. We are also very proud to announce the completion of the War Memorial restoration, and much more.

As ever we **welcome your feedback** and ideas. A comments form is included on the back page.

Le Grand Depart



The exciting Le Tour de France Grand Depart will be racing down the A59 on Sunday 6th July.

The race starts just after 9am from York.

The Grand Depart consists of 200 riders in 22 teams and will be watched by 3 billion people worldwide.

So if you want to watch this once in a lifetime spectacle in person and cheer on our British riders, be sure to get there early.

There will be a series of road closures and some disruption to transport services during the day, so be sure to plan ahead. More information, times, the best places to view and traffic information will be available on the "Le Tour" and the City of York websites.



Vacancy for Parish Councillors

The Parish Council has two vacancies which it would like to fill.

Have you ever thought that you might like to try for one of these places? If you care about the area that you live or work in and the issues facing local people, you could be a councillor.

We are looking to co-opt just for the next 12 months as we are due for elections in May next year. Please make contact with either the Clerk or one of the other Councillors (our contact details on the back page) to find out what is involved.

